

LOT
15

Carleton House, Palmerston Road, Liverpool L18 8AQ

VACANT RESIDENTIAL/REDEVELOPMENT OPPORTUNITY

Guide price **£525,000 +**



A residential redevelopment opportunity with planning permission to convert the former school into 6 flats and convert the existing coach house into a self-contained dwelling. The property comprises a substantial detached former school arranged over lower ground, ground, first and second floors. The overall site area is 0.30 ha (0.73ac) or thereabouts and comprises gardens and a former coach house.

Situated

The property is situated within a designated conservation area fronting Palmerston Road between Drewell Road and Lyndhurst Road, with the popular and affluent area of Mossley Hill South Liverpool, close to many local amenities.

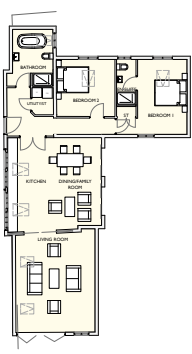
Planning

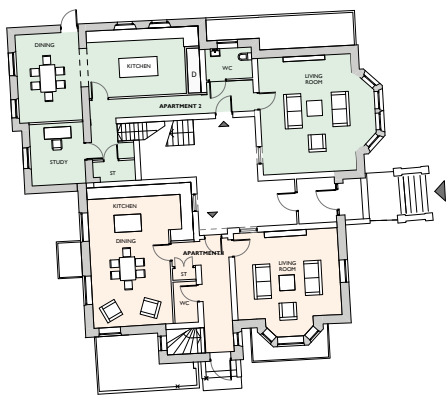
Planning permission was granted on 31st October 2011 by Liverpool City Council (Planning ref:11F/0237), to alter and convert the former school into 6no self-contained flats, convert the existing coach house into 1no self-contained dwelling and reconfigure the car parking area. Permission was also granted on 22nd May 2012 to vary condition 12 (ref 12F/0974). Plans are available from the auctioneers office.



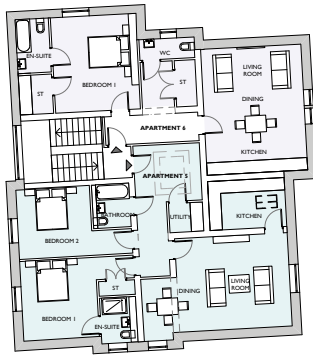
Not to scale. For identification purposes only

Ordnance Survey © Crown Copyright 2011. All rights reserved. Licence number 100020449

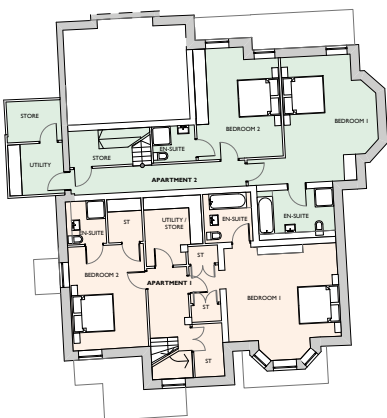




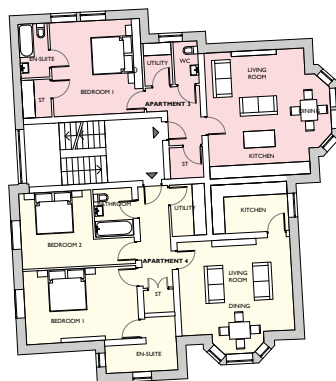
GROUND FLOOR PLAN



SECOND FLOOR PLAN



LOWER GROUND FLOOR PLAN



FIRST FLOOR PLAN

